

高雄國際機場 KAOHSIUNG INTL AD

RCKH
LOC RWY27

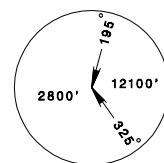
KAOHSIUNG APP
124.7 125.7

KAOHSIUNG TWR
118.7 120.7

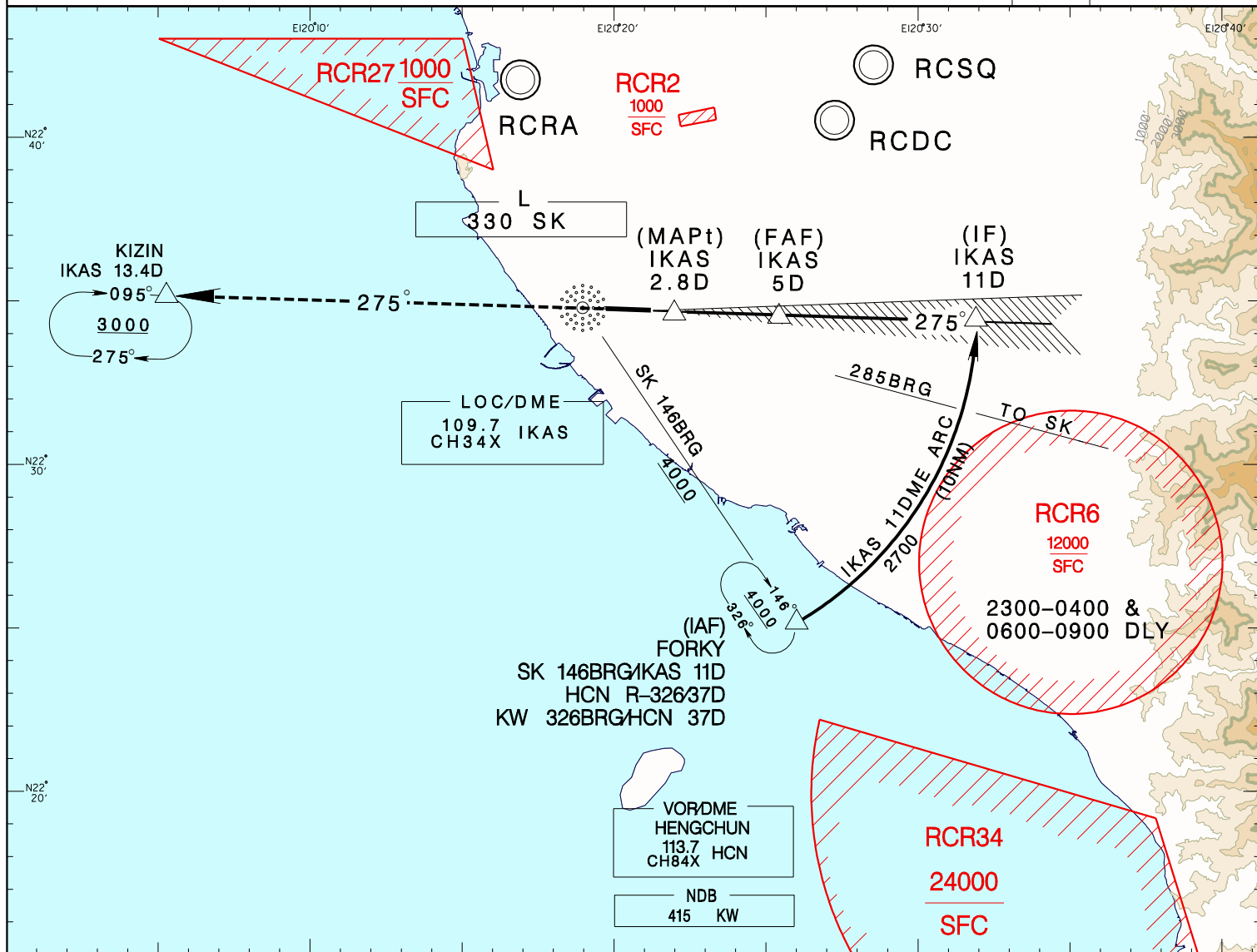
ATIS
127.8

Apt Elev: 31' Rwy27 THR Elev: 30' Trans Level: FL130 Trans Alt: 11,000'

VAR 3° W



BEARINGS ARE MAGNETIC; DISTANCES ARE NAUTICAL MILES; ELEVATIONS, HEIGHTS IN FEET

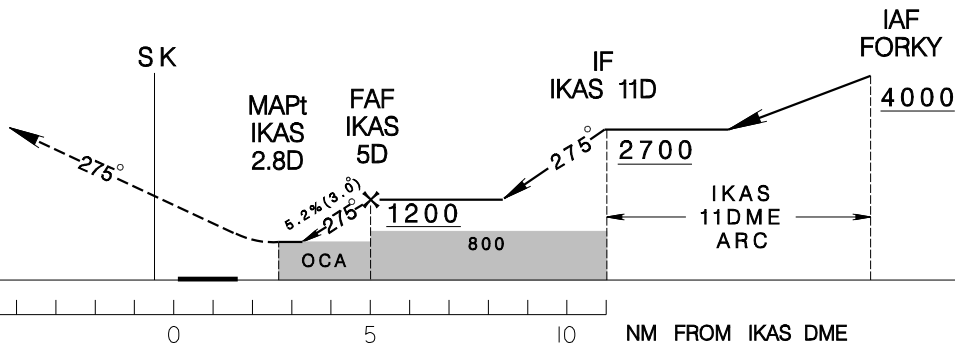


DIST to IKAS
ADVISORY ALT

4DME
870

5DME
1190

MISSED APCH:
CLIMB DIRECT TO SK,
THEN TRACK SK 275BRG TO
KIZIN, MAINTAIN 3000 AND HOLD.



MINIMA (OCA IN FT, VIS IN M, OCH IN FT)

CATEGORY	A	B	C	D
STRAIGHT IN	620/1600 589	620/1600 589	620/2700 589	620/2700 589

1. CIRCLING NOT AUTHORIZED.
2. THE INITIAL APCH ARC INFRINGES RCR-6 AREA, PRIOR COORDINATION WITH CAF WILL BE COMPLETED BY ATC BEFORE ISSUING CLEARANCE DURING RCR-6 ACTIVE HOURS.

* DME REQUIRED

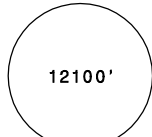
REV: CHG HCN VORTAC TO VORDME



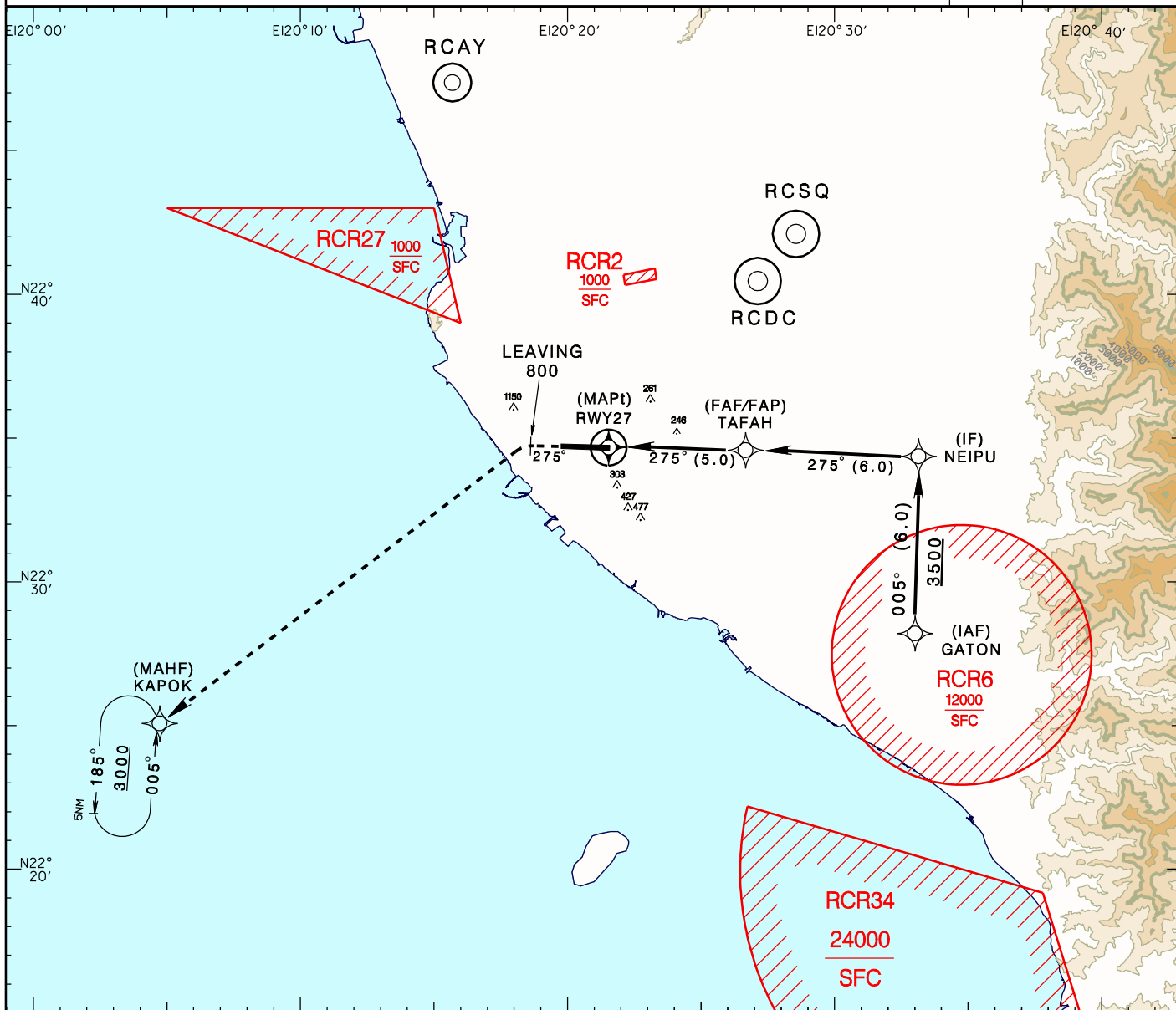
高雄國際機場

KAOHSIUNG INTL AD

RCKH
RNAV (GNSS) RWY27

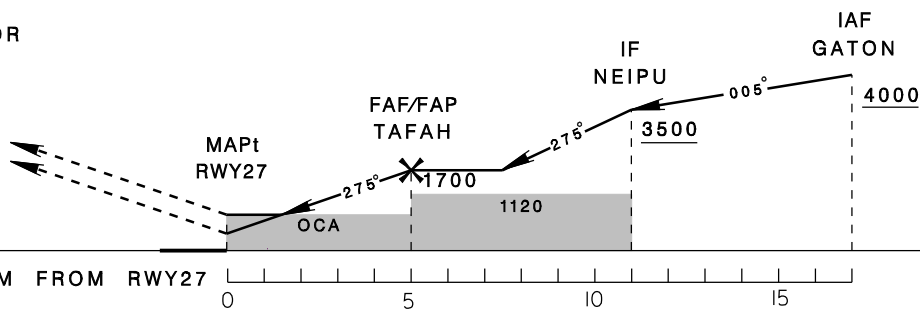
KAOHSIUNG APP 124.7 125.7	KAOHSIUNG TWR 118.7 120.7	ATIS 127.8	VAR 3° W	
Apt Elev: 31'	Rwy27 DTHR Elev: 30'	Trans Level: FL130		

BEARINGS ARE MAGNETIC; DISTANCES ARE NAUTICAL MILES; ELEVATIONS, HEIGHTS IN FEET



MISSED APCH:
CLIMB ON COURSE 275°, AT OR ABOVE 800 FEET TURN LEFT DIRECT TO KAPOK, MAINTAIN 3000 AND HOLD.
*NO TURN BEFORE MAPt.

VPA 3.05°
RDH 50 at displaced THR
223436.22N 1202140.18E



REV: RE-CHART