

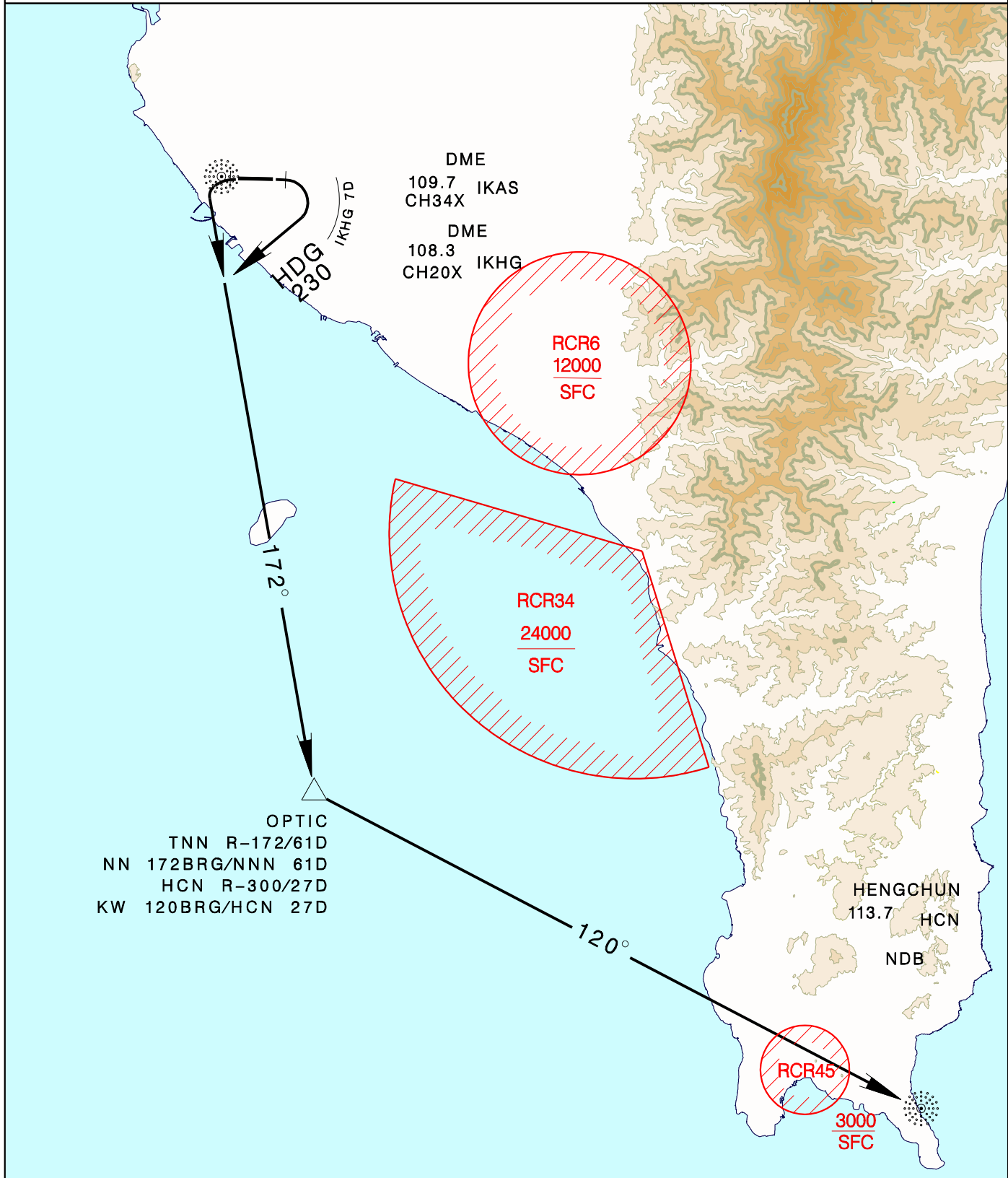


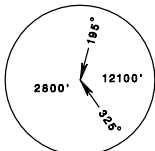


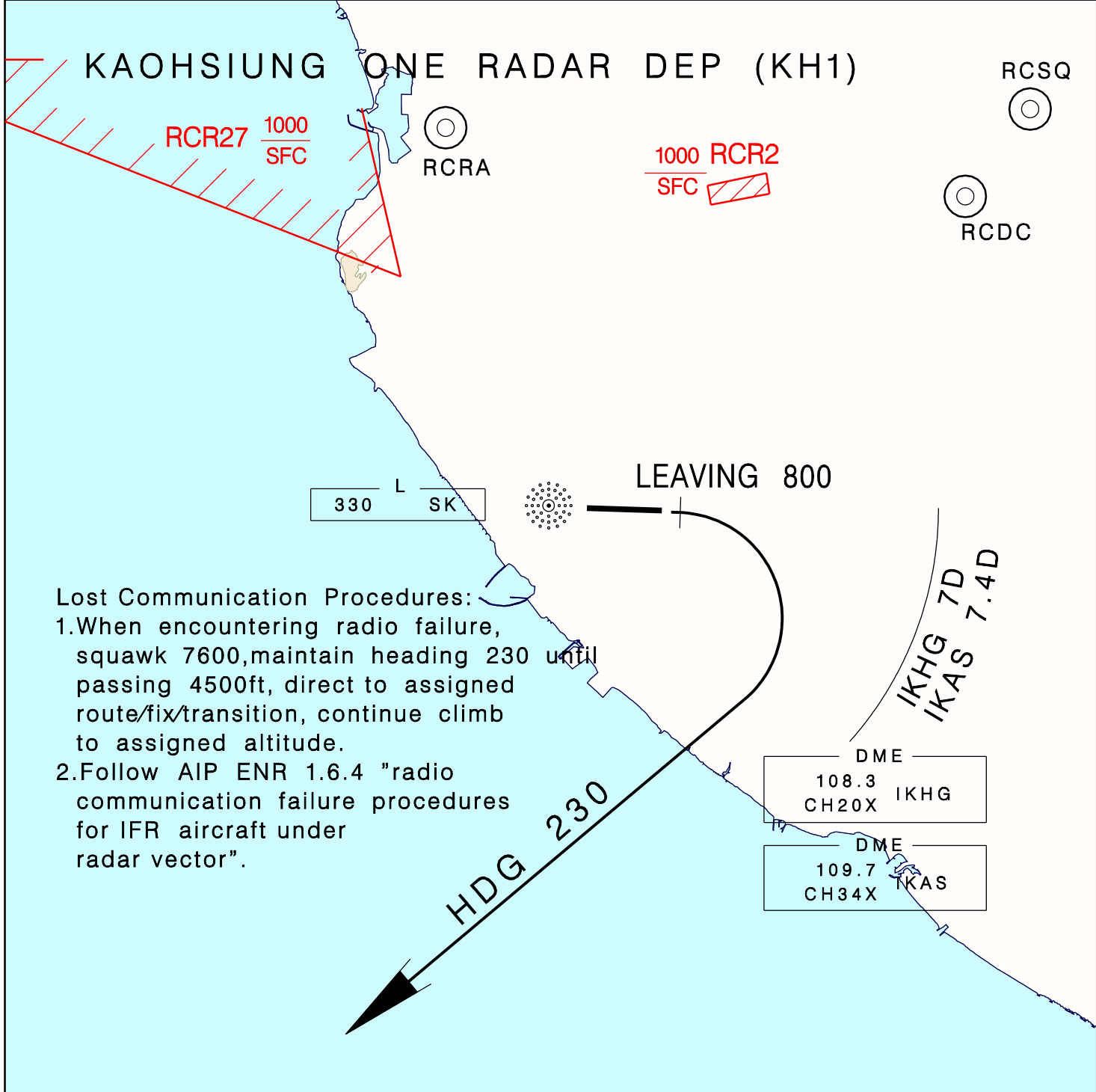




Apt Elev: Tr .		VAR 3° W	
BEARINGS ARE MAGNETIC; DISTANCES ARE NAUTICAL MILES; ELEVATIONS, HEIGHTS IN FEET			



KAOHSIUNG APP 124.7 125.7	KAOHSIUNG TWR 118.7 120.7	ATIS 127.8	 VAR 3° W MSA SK 25NM
Apt Elev: 31'	Trans Level: FL130	Trans Alt: 11,000'	
BEARINGS ARE MAGNETIC; DISTANCES ARE NAUTICAL MILES; ELEVATIONS, HEIGHTS IN FEET			



Lost Communication Procedures:  
 1. When encountering radio failure, squawk 7600, maintain heading 230 until passing 4500ft, direct to assigned route/fix/transition, continue climb to assigned altitude.  
 2. Follow AIP ENR 1.6.4 "radio communication failure procedures for IFR aircraft under radar vector".

REV: RE-CHART

Climb on RWY HDG until leaving 800ft, then turn right HDG 230, complete the turn within 7DME from IKHG (IKAS 7.4D), climb to ATC assigned altitude for vectors to assigned route/fix.

1. Minimum climb gradient required: 6% (365ft/NM) until 2,000ft.
2. Caution: pier cranes, terrain and stacks east, west and south of the airport.
3. No turn before DER.