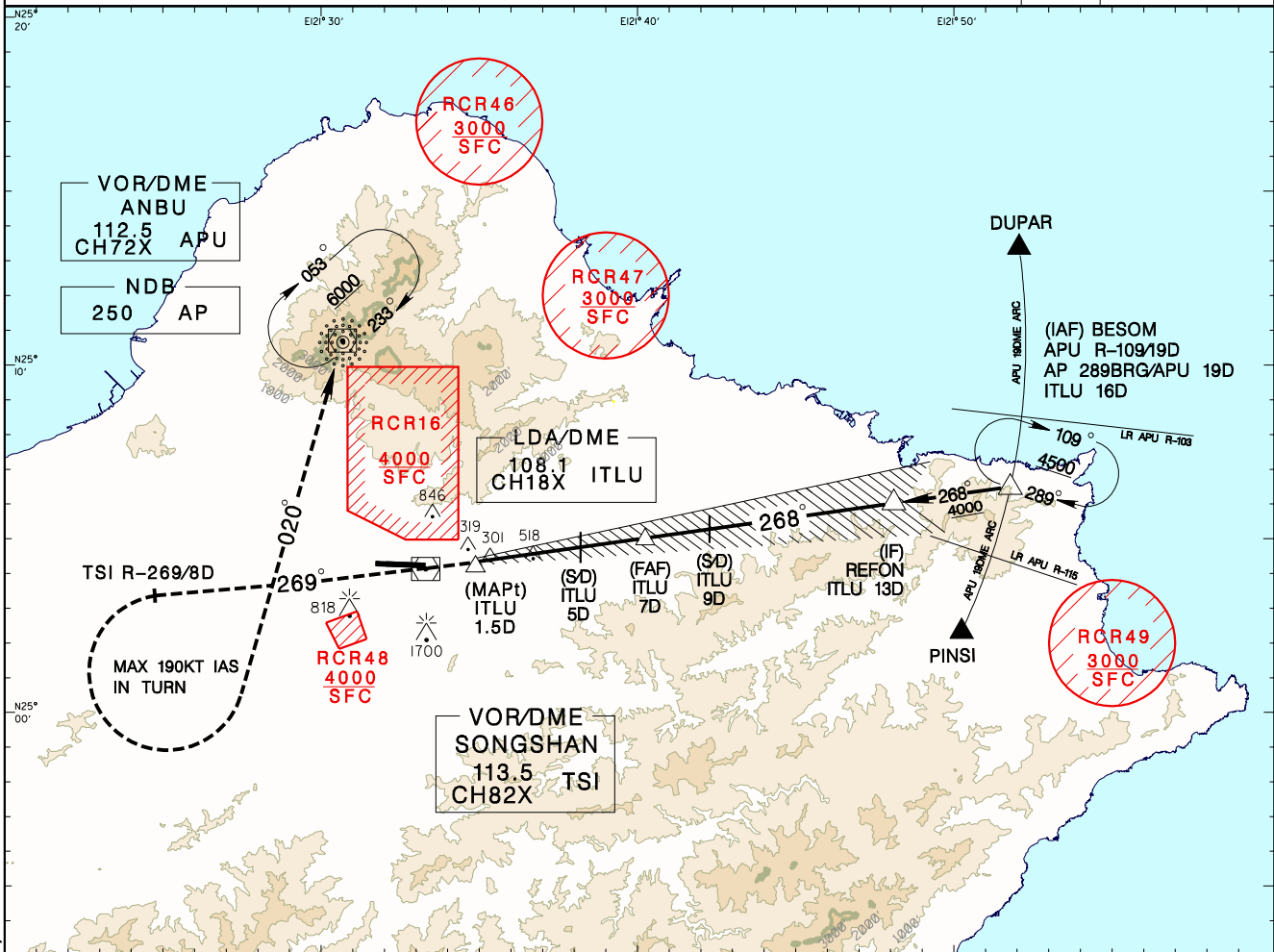


# 臺北/松山機場 TAIPEI/SONGSHAN AD

RCSS  
LDA RWY28

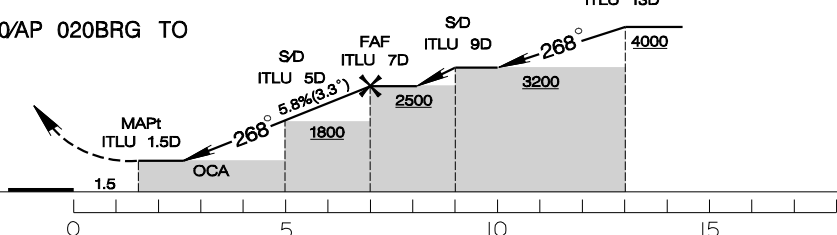
TAIPEI APP 119.7 119.6	SONGSHAN TWR 118.1	ATIS 127.4 341	VAR 4° W 
Apt Elev: 18'	Rwy28 THR Elev: 14'	Trans Level: FL130	
BEARINGS ARE MAGNETIC; DISTANCES ARE NAUTICAL MILES; ELEVATIONS, HEIGHTS IN FEET			



DIST to ITLU	3DME	4DME	5DME	6DME	7DME
ADVISORY ALT	1110	1460	1810	2160	2510

MISSED APCH:  
DIRECT TO TSI, THEN TRACK TSI R-269 UNTIL TSI 8D,  
CROSS TSI 8D AT OR ABOVE 3000,  
THEN TURN LEFT TRACK APU R-200/AP 020BRG TO  
APU/AP, MAINTAIN 6000 AND HOLD.

\*MISSED APCH TURN LIMITED TO  
190 KT IAS.



MINIMA (OCA IN FT, VIS IN M, OCH IN FT)				
CATEGORY	A	B	C	D
STRAIGHT IN	800/3600 782			
CIRCLING	1120/3600 1102	NA		

1.LDA COURSE OFFSETS FROM LANDING RWY BY 7 DEG.  
2.FINAL APCH COURSE CROSSES RWY CL EXTENSION AT 0.54NM FROM THR 28.  
3.CIRCLING ONLY AUTHORIZED FOR CAT A HELICOPTERS.  
4.A 1700ft-HIGH BUILDING AT 2.1NM SOUTH OF THR 28.  
5.A 818ft-HIGH BUILDING AT 2NM SW OF THR 10.  
6.CAUTION OBSTACLES UP TO 301FT PENETRATE THE VISUAL SEGMENT SURFACE(VSS)  
\*DME REQUIRED.

REV: MISSED APCH, MSA, BESOM HOLDING PATTERN, ADVISORY ATL, PROFILE VIEW



