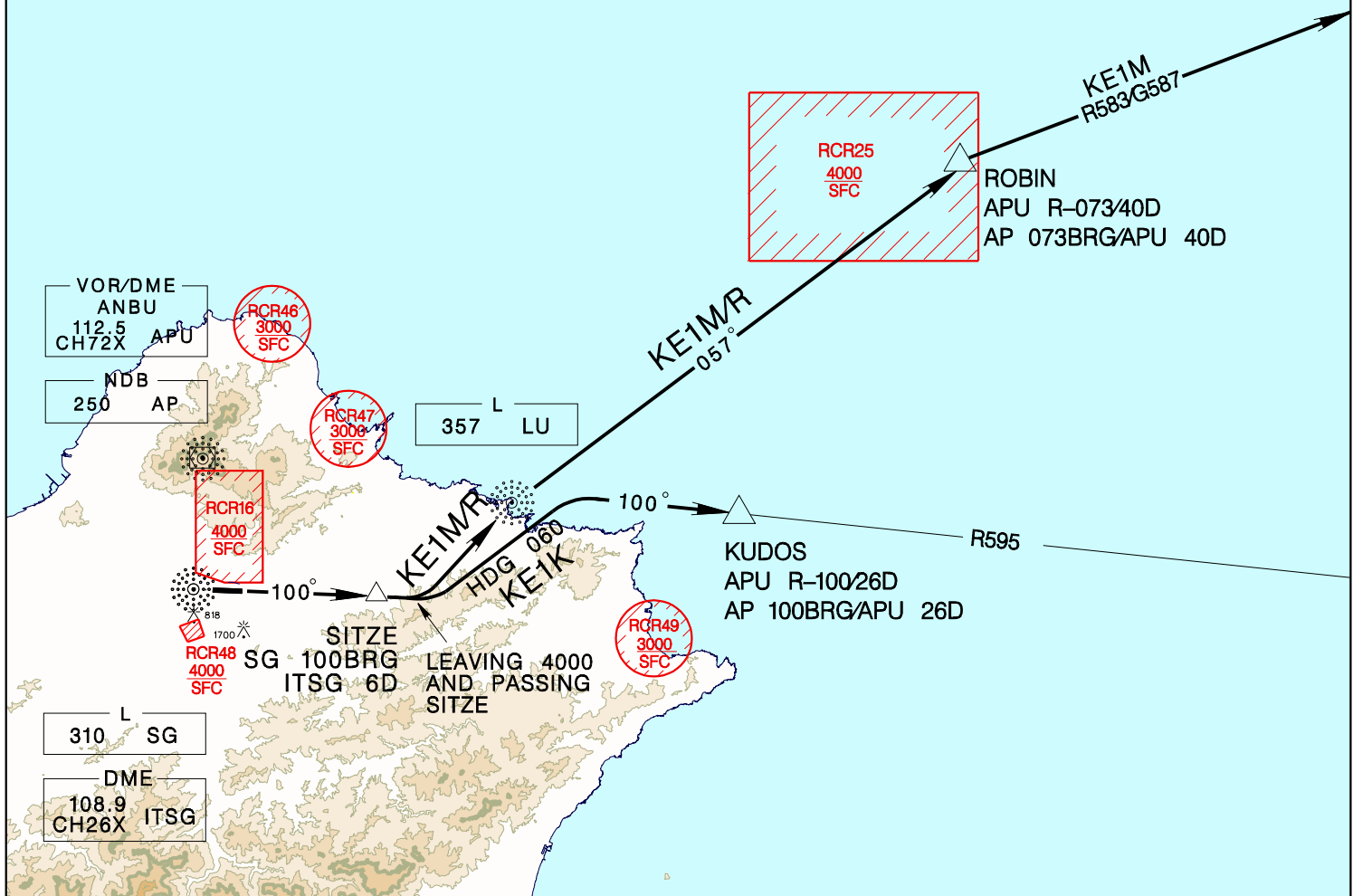
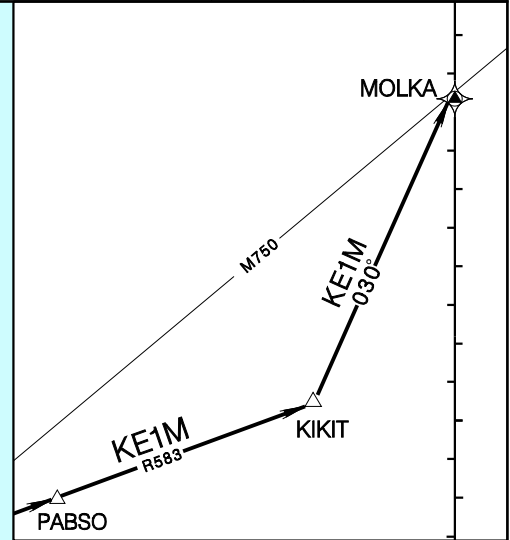


臺北/松山機場 TAIPEI/SONGSHAN AD

RCSS
SID

| | | | |
|--|-----------------------|--------------------|--|
| TAIPEI APP 119.7 119.6 | SONGSHAN TWR 118.1 | ATIS 127.4 341 | |
| Apt Elev: 18' | Trans Level: FL130 | Trans Alt: 11,000' | |
| BEARINGS ARE MAGNETIC; DISTANCES ARE NAUTICAL MILES; ELEVATIONS, HEIGHTS IN FEET | | | |

KEELUNG ONE KILO DEP (KE1K)
 KEELUNG ONE MIKE DEP (KE1M)
 KEELUNG ONE ROMEO DEP (KE1R)



| | |
|--|---|
| <p>KE1K Depart via SG 100BRG to SITZE, after leaving 4,000ft and passing SITZE, turn left HDG 060 to track APU R-100/AP 100BRG to KUDOS.</p> <p>KE1M Depart via SG 100BRG to SITZE, after leaving 4,000ft and passing SITZE, direct to LU, track LU 057BRG to ROBIN, join R583 to KIKIT, then direct to MOLKA.</p> <p>KE1R Depart via SG 100BRG to SITZE, after leaving 4,000ft and passing SITZE, direct to LU, track LU 057BRG to ROBIN.</p> | <ol style="list-style-type: none"> 1. Minimum climb gradient required 7.0% (425ft/NM) until 4,000ft. 2. Caution high terrain around airport. 3. A 1700ft-high BLDG at 2.1NM south of THR 28. 4. A 818ft-high BLDG at 2 NM SW of THR 10. |
|--|---|

REV: MSA

