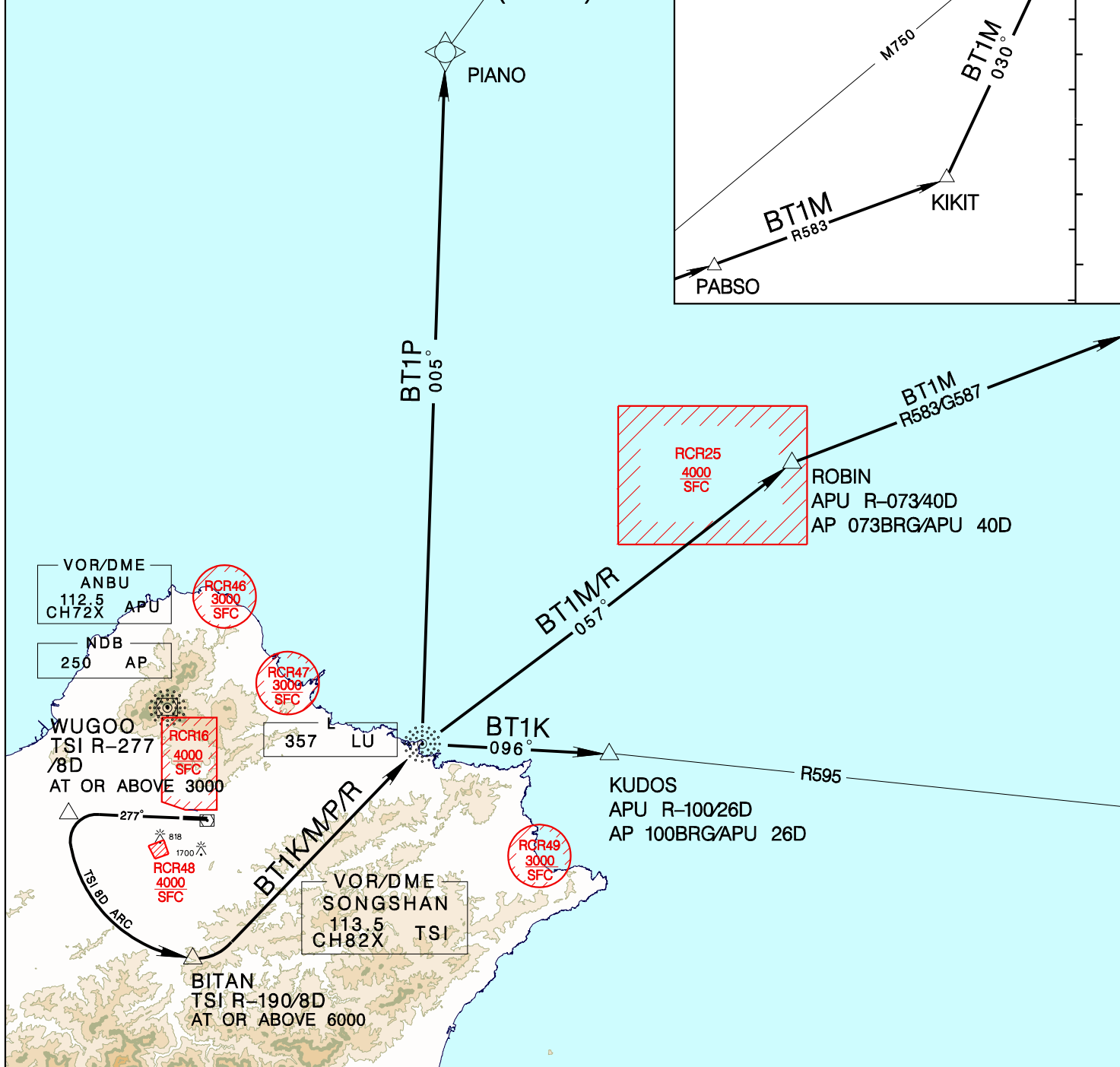


# 臺北/松山機場 TAIPEI/SONGSHAN AD

RCSS  
SID

|  |                       |                    |              |
|--|-----------------------|--------------------|--------------|
| TAIPEI APP<br>119.7 119.6  | SONGSHAN TWR<br>118.1 | ATIS<br>127.4 341  | VAR 4° W<br> |
| Apt Elev: 18'  | Trans Level: FL130    | Trans Alt: 11,000' |              |
| BEARINGS ARE MAGNETIC; DISTANCES ARE NAUTICAL MILES; ELEVATIONS, HEIGHTS IN FEET |                       |                    | MSA TSI 25NM |

BITAN ONE KILO DEP (BT1K)  
BITAN ONE MIKE DEP (BT1M)  
BITAN ONE PAPA DEP (BT1P)  
BITAN ONE ROMEO DEP (BT1R)



Depart via TSI R-277 to WUGOO, then turn left join TSI 8DME arc to BITAN, then direct to LU, cross WUGOO at or above 3,000, cross BITAN at or above 6,000, then:  
 BT1K: track LU 096BRG to KUDOS.  
 BT1M: track LU 057BRG to ROBIN, join R583 to KIKIT, then direct to MOLKA.  
 BT1P: direct to PIANO.  
 BT1R: track LU 057BRG to ROBIN.

1. Minimum climb gradient required 5.0%(305ft/NM) until 2,000ft.
2. Caution high terrain around airport.
3. A 1700ft-high BLDG at 2.1NM south of THR 28.
4. A 818ft-high BLDG at 2 NM SW of THR 10.

REV: MSA



