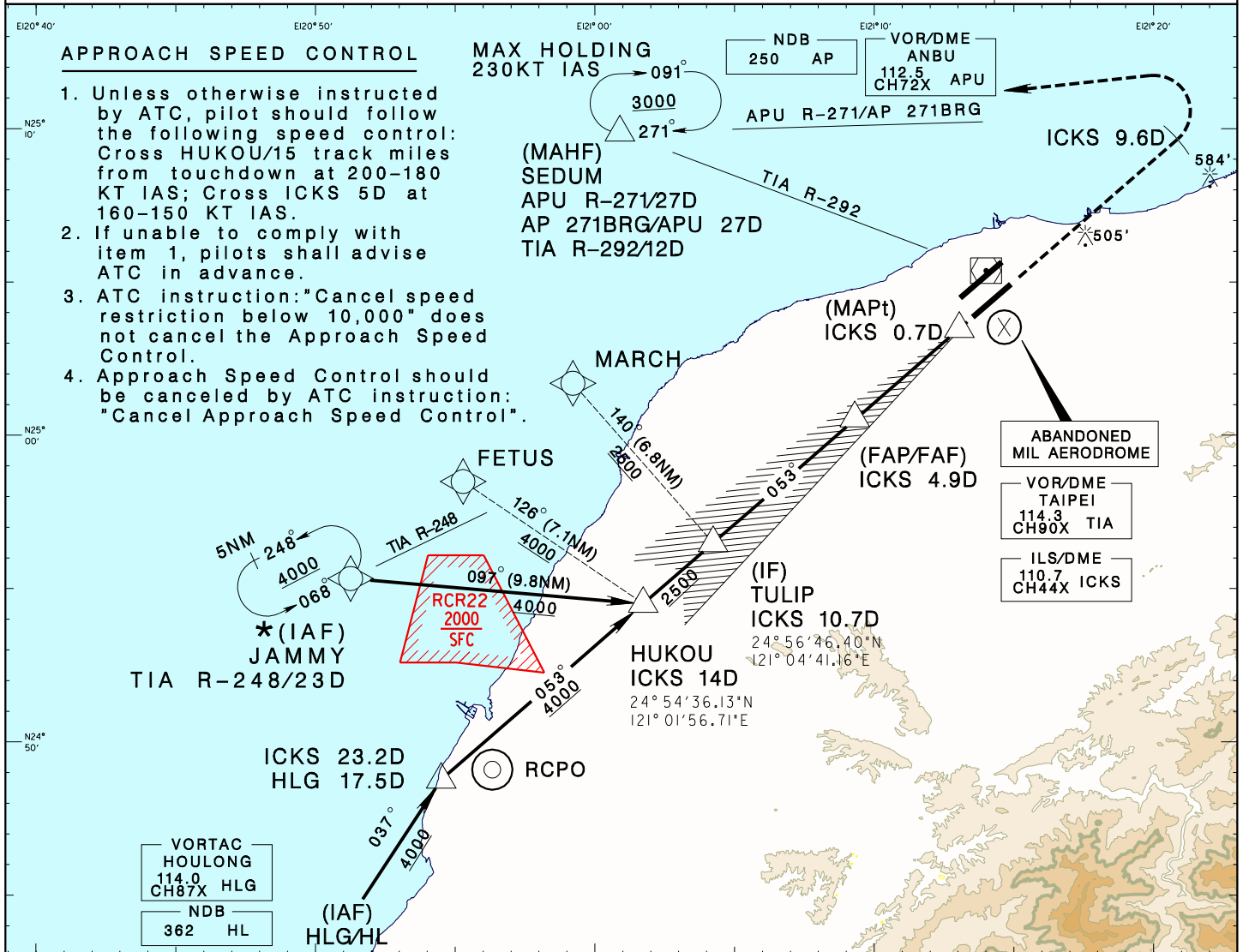


臺灣桃園國際機場

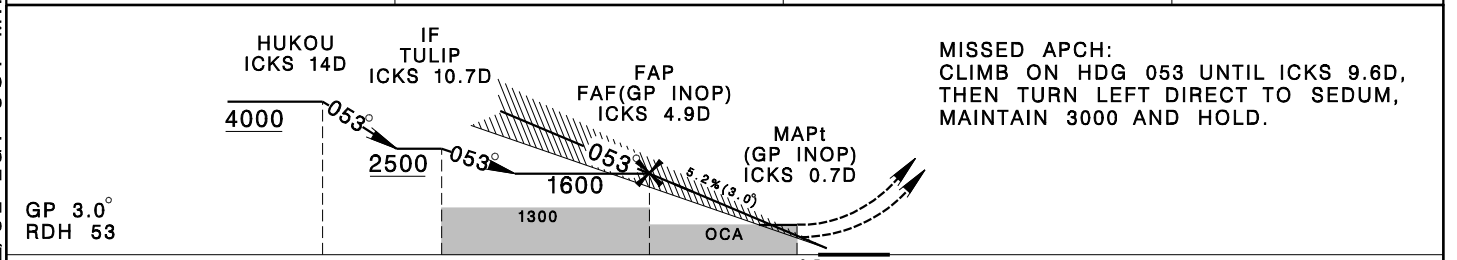
TAIPEI/TAIWAN TAOYUAN INTL AD

ILS or LOC RWY05R RCTP

TAIPEI APP 125.1 128.5	TAIPEI TWR 118.7 129.3	ATIS 127.6	VAR 4° W MSA TIA VOR 25NM
Apt Elev: 108'	Rwy05R DTHR Elev: 107'	Trans Level: FL130	
BEARINGS ARE MAGNETIC; DISTANCES ARE NAUTICAL MILES; ELEVATIONS, HEIGHTS IN FEET			



4DME	3DME	2DME	DIST to ICKS
1380	1060	740	ADVISORY ALT



MINIMA (OCA IN FT, VIS IN M, OCH IN FT)

CATEGORY		A	B	C	D
ILS	FULL	307/800 RVR550 200	315/800 RVR550 208	323/800 RVR550 216	334/800 RVR550 227
	TDZ/CL LGT OUT	307/800 RVR750 200	315/800 RVR750 208	323/800 RVR750 216	334/800 RVR750 227
	ALS OUT	307/1200 RVR1200 200	315/1200 RVR1200 208	323/1200 RVR1200 216	334/1200 RVR1200 227
LOC (GP INOP)	FULL	630/1200 RVR1200 522	630/1600 522	630/1700 522	630/1700 522
	ALS OUT	630/1600 522	630/1600 522	630/2400 522	630/2400 522
CIRCLING		880/1900 772	930/2800 822	1030/4400 922	1030/4800 922

1. CIRCLING NOT AUTHORIZED SOUTHEAST OF RWY 05R/23L.
 2. *TRAFFIC FROM APU SHOULD JOIN JAMMY HOLDING PATTERN FOR COURSE REVERSAL.
 3. RADAR MONITORING REQUIRED FOR MISSED APCH AND DEAD-RECKONING SEGMENT.
- *DME REQUIRED.

REV: ILS FULL RVR; ADD ILS TDZ/CL LGT OUT MINIMA