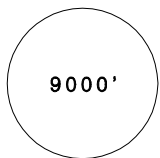


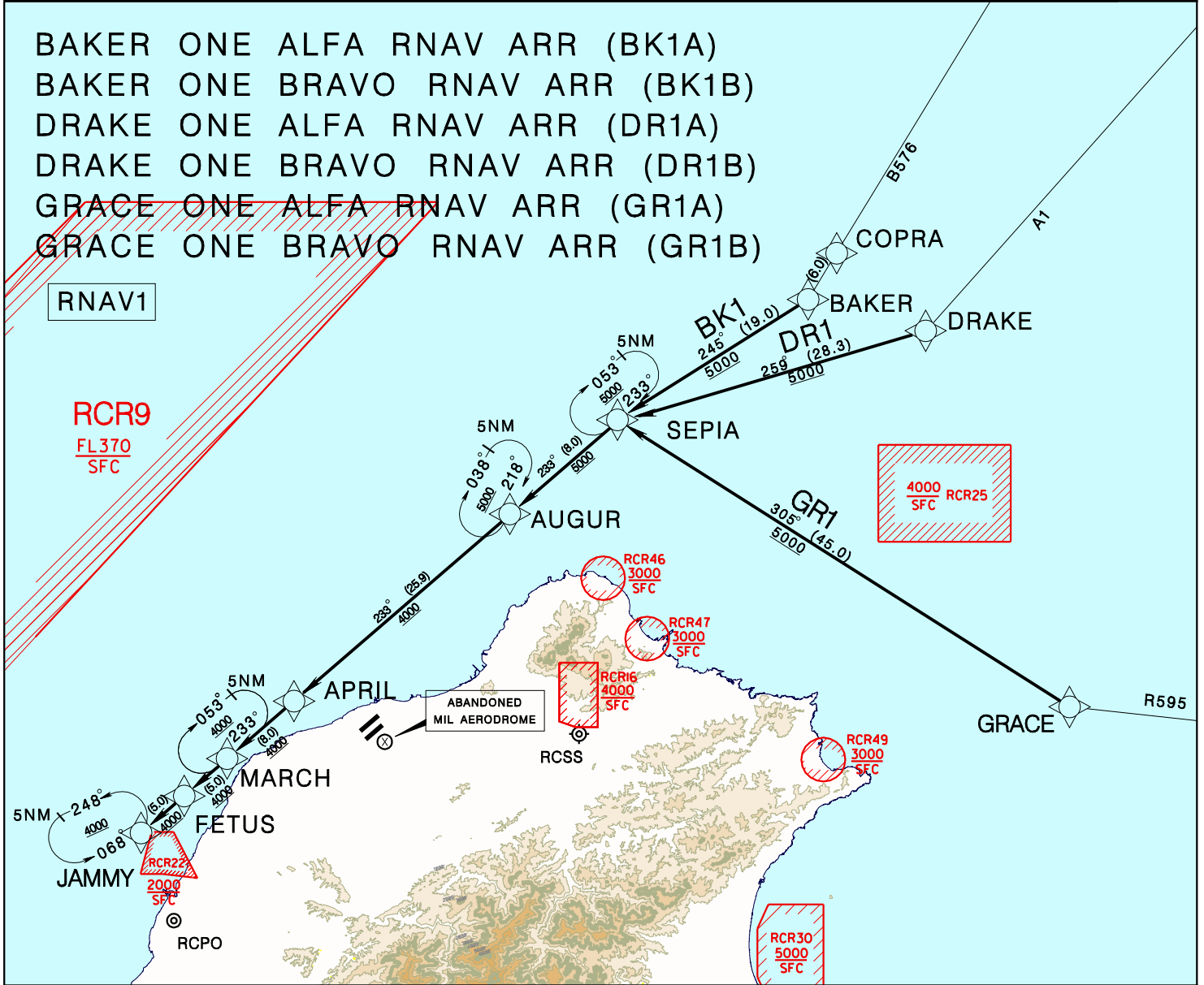
臺灣桃園國際機場

TAIPEI/TAIWAN TAOYUAN INTL AD

RCTP
STAR

TAIPEI ACC 125.5 123.6	TAIPEI APP 125.1 128.5	ATIS 127.6	VAR 4° W	 9000' MSA ARP 25NM
Apt Elev: 108'	Trans Level: FL130	Trans Alt: 11,000'		
BEARINGS ARE MAGNETIC; DISTANCES ARE NAUTICAL MILES; ELEVATIONS, HEIGHTS IN FEET				

BAKER ONE ALFA RNAV ARR (BK1A)
 BAKER ONE BRAVO RNAV ARR (BK1B)
 DRAKE ONE ALFA RNAV ARR (DR1A)
 DRAKE ONE BRAVO RNAV ARR (DR1B)
 GRACE ONE ALFA RNAV ARR (GR1A)
 GRACE ONE BRAVO RNAV ARR (GR1B)



FOR RWY05L/05R:

BK1A (From B576): From BAKER to SEPIA then AUGUR, APRIL, MARCH, FETUS to JAMMY.
 DR1A (From A1): From DRAKE to SEPIA then AUGUR, APRIL, MARCH, FETUS to JAMMY.
 GR1A (From R595): From GRACE to SEPIA then AUGUR, APRIL, MARCH, FETUS to JAMMY.

* ATC may issue shortcut from MARCH to ANKLE/TULIP or from FETUS to KARAN/HUKOU for ILS approaches (refer to relevant chart).

FOR RWY23R/23L:

BK1B (From B576): From BAKER to SEPIA then AUGUR.
 DR1B (From A1): From DRAKE to SEPIA then AUGUR.
 GR1B (From R595): From GRACE to SEPIA then AUGUR.

1. DESCENT PLANNING

Pilot should plan to descend as follows:
 RWY05L/05R: Cross COPRA, DRAKE or GRACE at and maintain FL200.
 RWY23R/23L: Cross COPRA, DRAKE or GRACE at or below FL140.
 Actual descent clearance will be issued by ATC.

- 2. Critical DME & DME gap not surveyed.
- 3. Radar monitoring required.

REV: APT ELEV