

SIMULATION USE ONLY. DO NOT USE FOR REAL WORLD NAVIGATION.

AERODROME CHART

22°19'02"N
114°12'09"E

ELEVATION 15 FT AMSL

(15 JAN 2014) ivao.hk

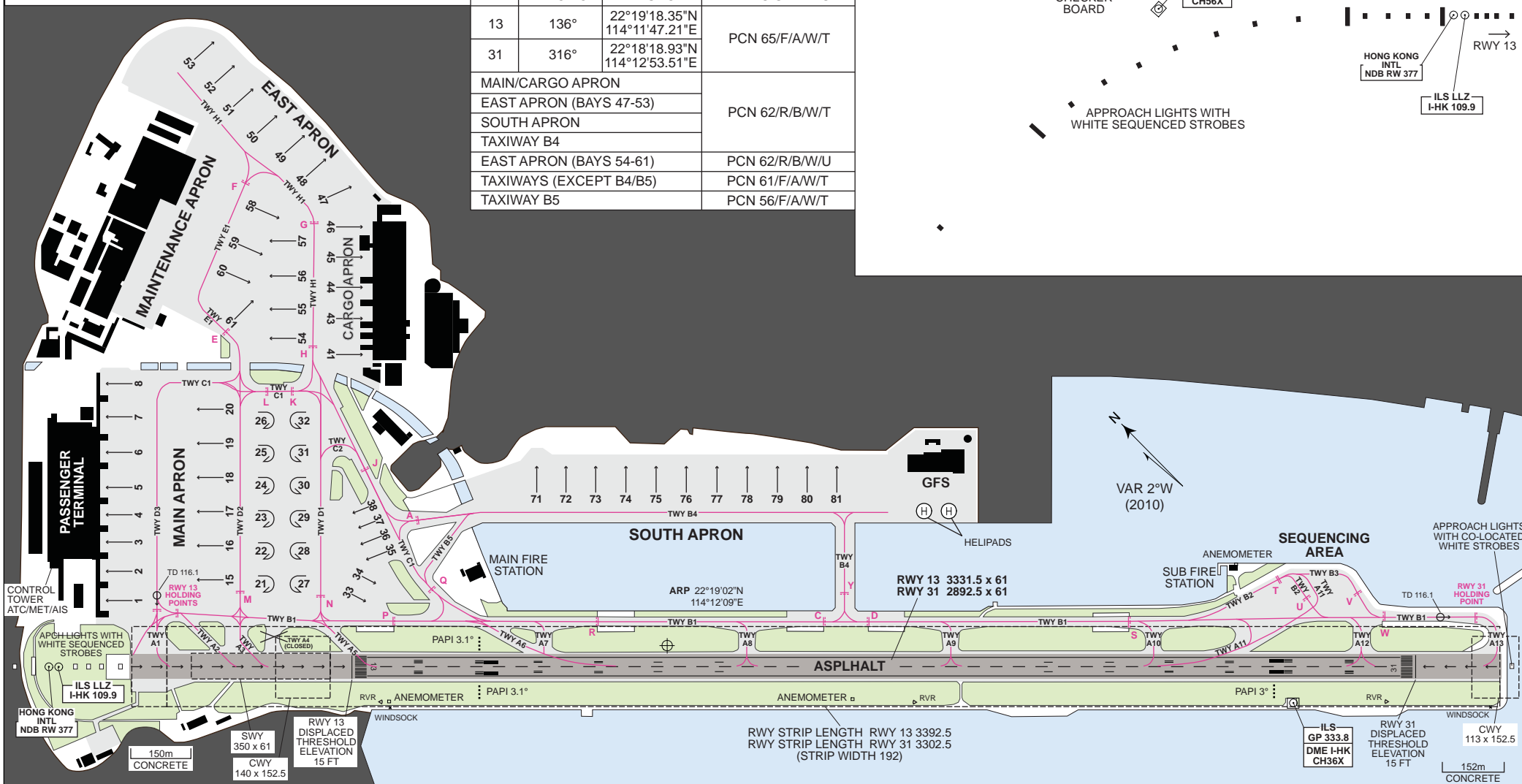
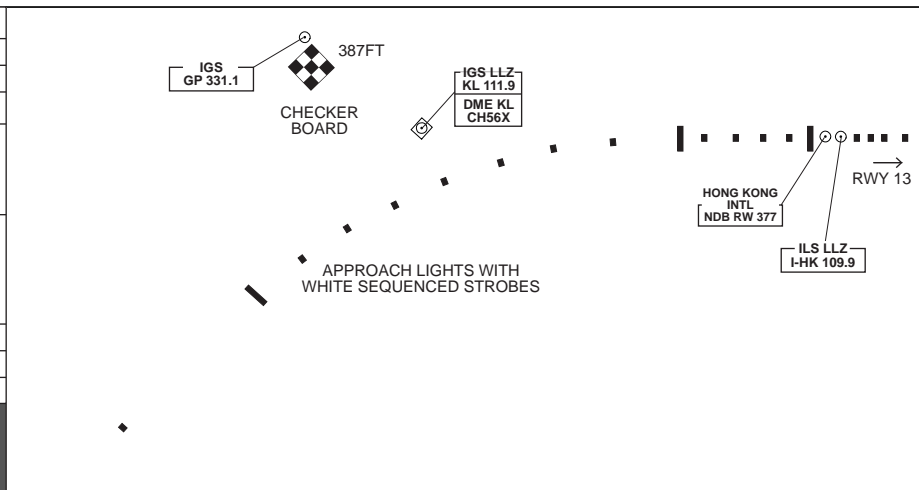
TWR 118.7

GROUND 121.6

VHXX / KAI TAK INTERNATIONAL AIRPORT

ELEVATIONS IN FEET AMSL
DIMENSIONS IN METRES
BEARINGS ARE MAGNETIC

VOR CHECK PT AND FREQ		⇨ TD 116.1	
TAXI-HOLDING POSITION		--- Y	
TAXIWAY CENTRELINE		--- TWY B4	
RWY	DIRECTION	THRESHOLD	BEARING STRENGTH
13	136°	22°19'18.35"N 114°11'47.21"E	PCN 65/F/A/W/T
31	316°	22°18'18.93"N 114°12'53.51"E	
MAIN/CARGO APRON			
EAST APRON (BAYS 47-53)		PCN 62/R/B/W/T	
SOUTH APRON			
TAXIWAY B4			
EAST APRON (BAYS 54-61)		PCN 62/R/B/W/U	
TAXIWAYS (EXCEPT B4/B5)		PCN 61/F/A/W/T	
TAXIWAY B5		PCN 56/F/A/W/T	



IVAO HONG KONG